

# Web'n'walk Manager

User manual





# Content

1. Introduction	3
2. Hardware and Software Requirements	4
3. Software Installation and Setup of Access through Internet 4G Service	5
4. Software Installation and Setup of Access through EDGE/GPRS	8
5. Main Window	11
6. Connection and Disconnection	12
7. Connection to T-Mobile HotSpot	13
8. Sending SMS	14
9. Network Selection and Logging-Off the Network	15
10. Equipment Management	16
11. APN Management	17
12. For Advanced Users	20
13. Abbreviations	21

# 1. Introduction

**Web'n'walk Manager allows easy setup of Internet access and also access to the Internet from your computer using mobile data transmission provided within the framework of Internet 4G, EDGE/GPRS, and WLAN services.**

If you decide to use the Web'n'walk Manager, you do not have to spend time by installing the modem and configuring your connection. The software does everything for you. It is only enough to connect the modem or telephone to your computer using a cable, Bluetooth, infrared port, or insert a suitable PCMCIA card into your notebook and launch the installation file of this software. It takes several minutes for the program to guide you through the installation process and you can immediately start using your Internet connection through Internet 4G, EDGE/GPRS, or WLAN service.

Internet access through Internet 4G service requires:

- a 4G Modem or 4G PC Card
- a SIM card with T-Mobile Internet 4G service activated
- a 4G Modem connected to your computer by cable or having a 4G PC Card inserted

Internet access through EDGE/GPRS requires:

- a telephone with EDGE/GPRS data transmission support
- active T-Mobile EDGE/GPRS service (this service can be activated through T-Mobile's info-line free of charge)
- a telephone connected to your computer by cable, Bluetooth, or infrared port

The software supports all EDGE/GPRS telephones and data devices sold through the sales network of T-Mobile Czech Republic a.s. In case that it is not possible to install your device you can upgrade your software by clicking on Aktualizace programu (Software Update) in Nastavení (Settings) menu available after clicking on the button with key symbol.

Web'n'walk Manager is available in T-Mobile brand stores on a CD or it can be downloaded free of charge from [www.t-mobile.cz/wnwmanager](http://www.t-mobile.cz/wnwmanager).

## 2. Hardware and Software Requirements

### Minimal PC Configuration for a 4G Modem

Minimal Hardware Configuration:

- Pentium-class II processor (300 MHz)
- 64 MB RAM (128 MB recommended)
- 10 MB of free disk space
- USB connector or Ethernet port (for optional cable)
- CD-ROM drive

Supported Operating Systems:

- Microsoft Windows 2000 (PC with one processor, administrator's rights required)
- Microsoft Windows XP Home (administrator's rights required)
- Microsoft Windows XP Professional (administrator's rights required)
- Windows Vista 32/64bit (administrator rights required)

### Minimal PC Configuration for a 4G PC Card

Minimal Hardware Configuration:

- Pentium-class II processor (300 MHz)
- 64 MB RAM (128 MB recommended)
- 10 MB of free disk space
- CD-ROM drive
- PCMCIA type II slot

Supported Operating Systems:

- Microsoft Windows 2000 (administrator's rights required)
- Microsoft Windows XP Home (administrator's rights required)
- Microsoft Windows XP Professional (administrator's rights required)
- Window Vista

# 3. Software Installation and Setup of Access through Internet 4G Service

Insert the installation CD into your computer and in displayed menu select Web'n'walk Manager installation according to preferred language (Czech/English) or run the installation package downloaded from [www.t-mobile.cz/wnwmanager](http://www.t-mobile.cz/wnwmanager).

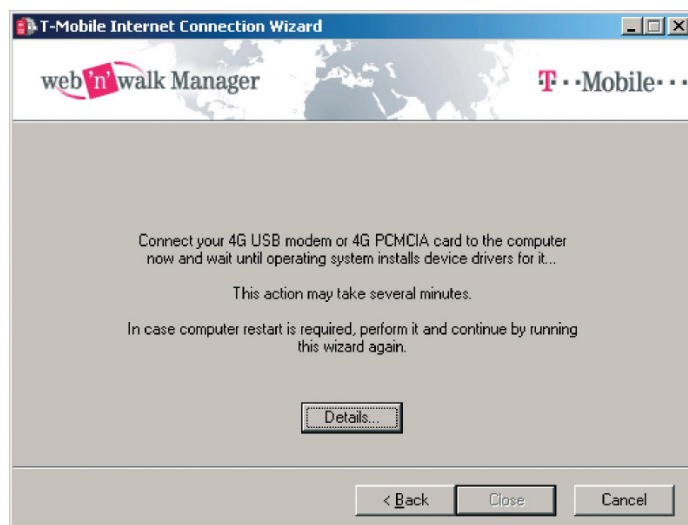
## Step 1

After initialization of the installation you will be welcomed by the wizard which will inform you about its current status in all next steps:



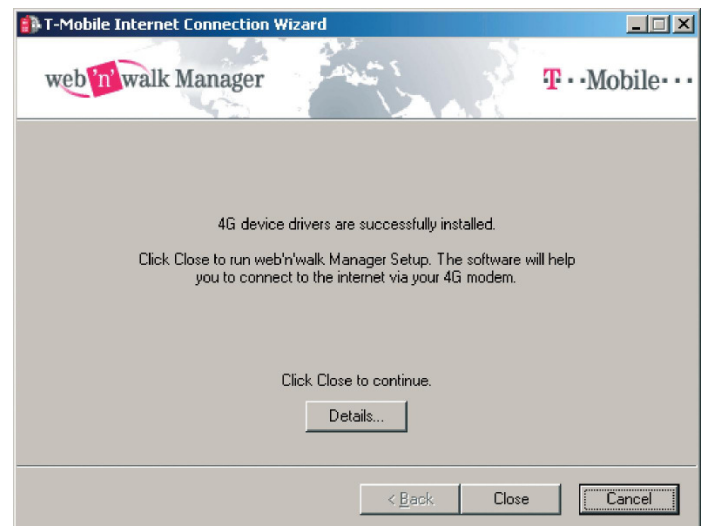
Choose the required connection method and press **Finish**.

## Step 2



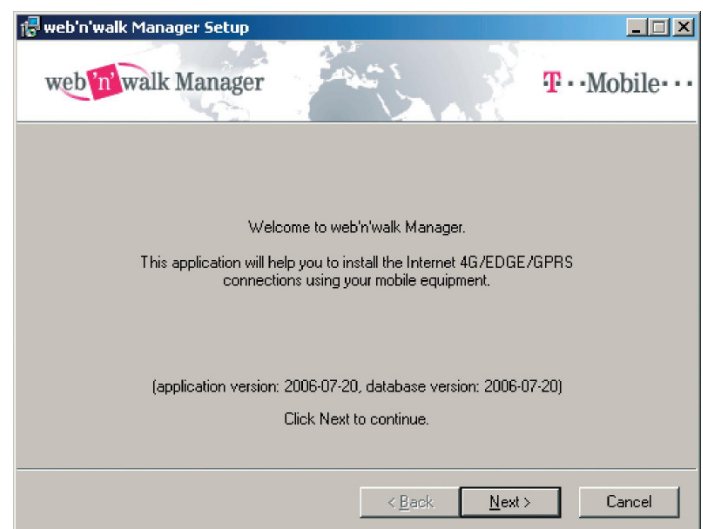
**Connect your 4G Modem or 4G PC Card to your computer** and wait for the operating system to install relevant drivers. This operation may take several minutes.

## Step 3



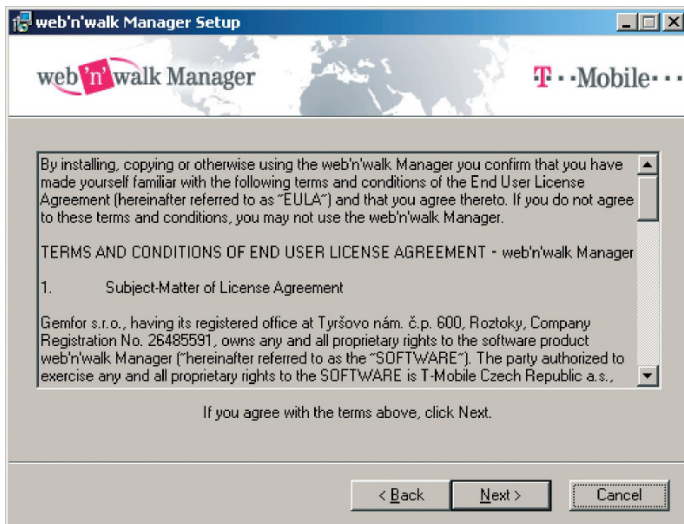
Press **Close**.

## Step 4



Press **Next**.

### Step 5



Read the license agreement carefully and if you agree, press **Next**.

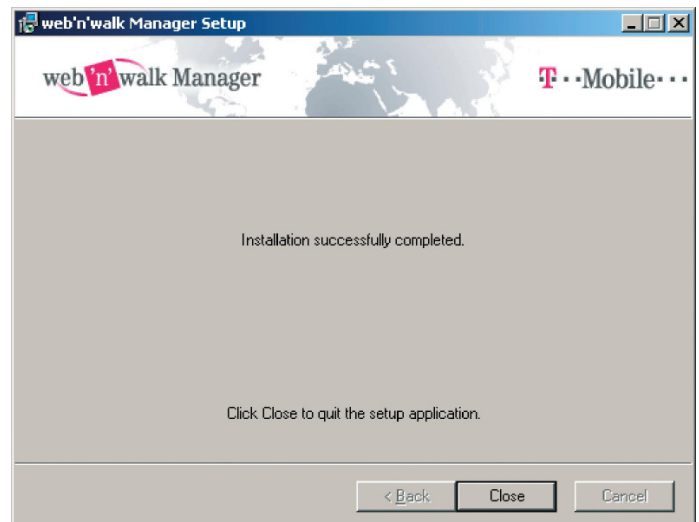
### Step 6



Confirm the folder where the application should be installed. You can choose your preferred folder by clicking the **Browse** button. Press **Finish** button.

### Step 7

The application is now successfully installed in your computer.



Press **Close**.

### Step 8

The wizard continues with the installation of the device.



Press **Next**.

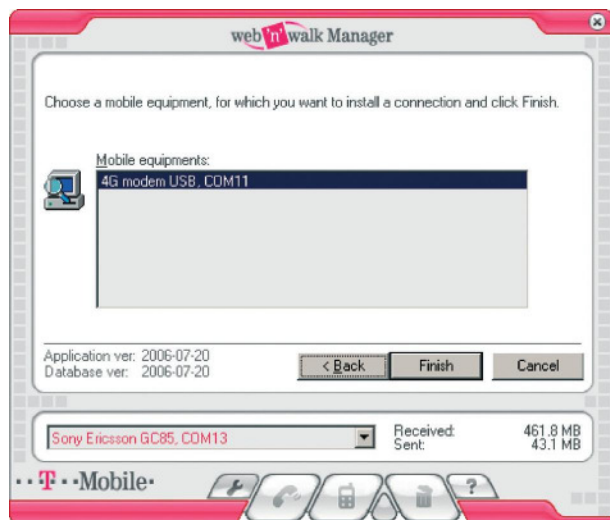
### Step 9



Press **Next**.

### Step 10

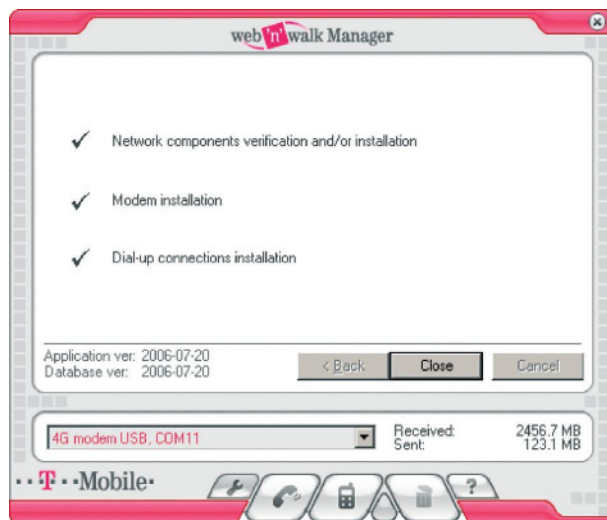
The w'n'w Manager will guide the process of connected device detection. The detection usually takes several seconds.



When your device is visible in the list, select it by clicking the mouse and press Finish. In the event of any problems with the detection we recommend that you press Back button, disconnect the device, reconnect it again and repeat the detection process.

### Step 11

This step installs the connected device and sets up the Internet connection through Internet 4G service.



Press **Close**.

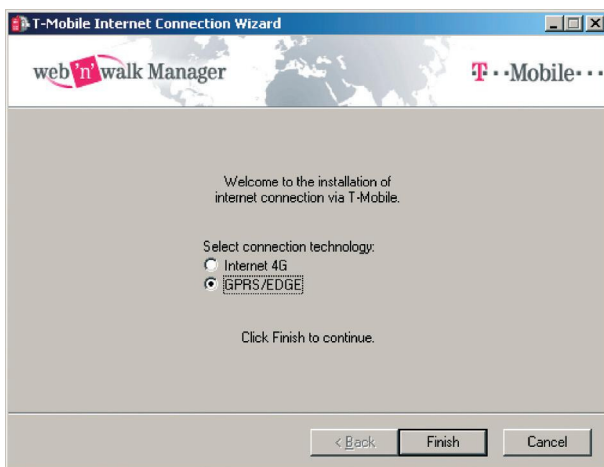
Now your computer is ready for the connection to the Internet over T-Mobile Internet 4G service.

# 4. Software Installation and Setup of Access through EDGE/GPRS

Insert the installation CD into your computer and in displayed menu select Web'n'walk Manager installation according to preferred language (Czech/English) or run the installation package downloaded from [www.t-mobile.cz/wnwmanager](http://www.t-mobile.cz/wnwmanager).

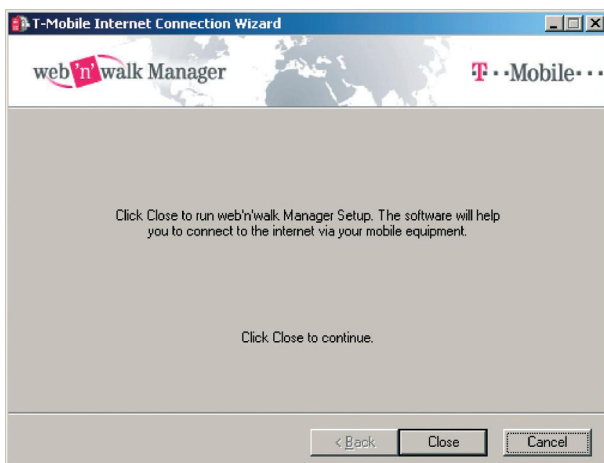
## Step 1

After initialization of the installation you will be welcomed by the wizard which will inform you about its current status in all next steps:



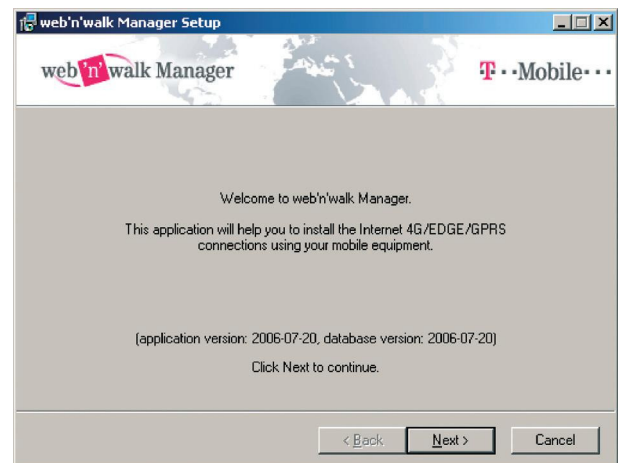
Choose the required connection method and press **Finish**.

## Step 2



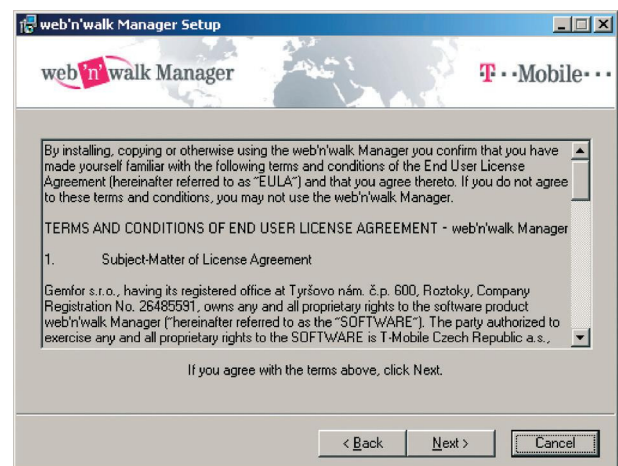
Press **Close** to continue.

## Step 3



Press **Next**.

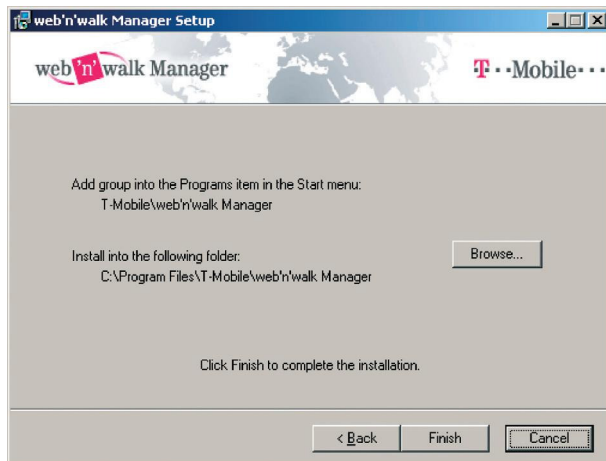
## Step 4



Read the license agreement carefully and if you agree, press **Next**.



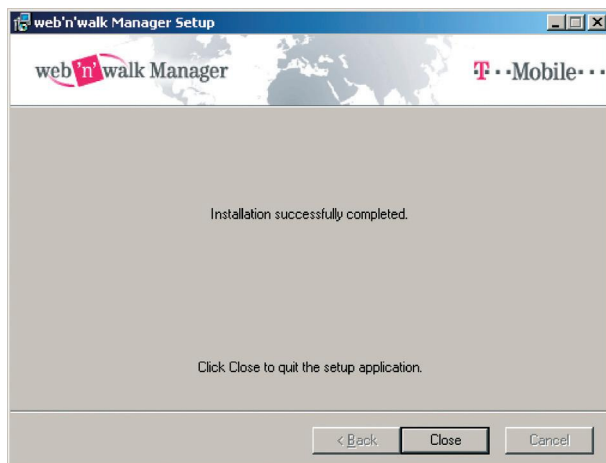
### Step 5



Confirm the folder where the application should be installed. You can choose your preferred folder by clicking the **Browse** button. Press **Finish** button.

### Step 6

The application is now successfully installed in your computer.



Press **Close**.

### Step 7

The application is now installed in your computer. The wizard will continue with device installation.



### Notice:

Now connect the handset to the computer via cable, bluetooth or infrared port or insert the PCMCIA card into your notebook!

In some cases the connecting of the device can cause automatic detection of the device by Windows. If you are asked to confirm the installation of standard drivers (warning regarding the missing digital signature) confirm that by pressing Yes button!

If you are going to install GPRS PCMCIA card Option Globetrotter it is necessary to switch off the PIN lock in the SIM-card you are using together with it. The PIN code has to be switched off always you are using the PCMCIA card together with Web'n'walk Manager (e.g. during GPRS connection establishing). In case of must to switch on the PIN lock it is necessary to install the original driver from Option CD – more in chapter 9. If it is not quite necessary to use the PIN lock we don't recommend the installation of the original driver because of possible problems with some configurations of Windows operating system. If the PIN lock is switched off the installation of Web'n'walk Manager only is sufficient.

Press **Next**.

### Step 8

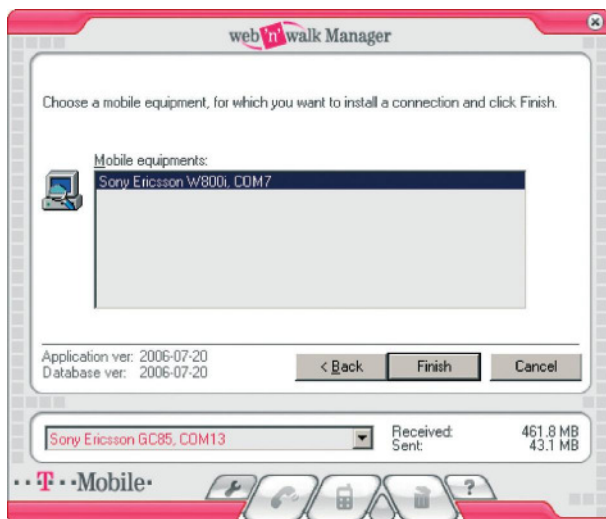
Connect your mobile telephone or data device. If you are using an equipment connected through infrared port or bluetooth, it may be also necessary to use the guide for port activation in your telephone.



Press **Next**.

### Step 9

The Web'n'walk Manager will detect the connected device. The detection usually takes several seconds.



When your device is visible in the list, select it by clicking the mouse and press **Finish**. In the event of any problems with the detection we recommend that you press **Back** button, disconnect the device, reconnect it again and repeat the detection process.

### Step 10

This step installs the connected device and sets up the Internet connection through GPRS.

**Note:** If you are prompted by Windows to confirm the drivers installation without digital signature, confirm the prompt by clicking Yes!



Press **Close**.

Now your computer is ready for the connection to the Internet over T-Mobile GPRS service (APN Internet).

## 5. Main Window

After the successful installation of the Web'n'walk Manager software its availability is indicated by the icon on the Windows task bar.

The software starts automatically in the background when Windows is restarted. It can be accessed at any time by double-clicking on its icon on the task bar.

The main window in the default status:



The main application window if your PC supports WLAN technology and the T-Mobile HotSpot service is accessible:



More details about the connection through WLAN can be found in Section 7 – WLAN Setup.

### Description of Main Window's Items

#### Menu of installed device

This list enables you to select the equipment through which you will connect to the Internet. If the software has just been installed, only one device will be shown here (or other modems previously installed in the computer). Web'n'walk Manager allows you to have multiple devices installed in your computer simultaneously (see Section 10) and to choose the one you need for current connection from the pull-down menu. Devices installed through T-Mobile Communication Centre are highlighted with red color and they serve for connection through Internet 4G or GPRS/EDGE services.

#### Information about Transmitted Data Volume

Information about transmitted data volume can be found right from the name of the currently selected device. The values apply to the selected device. If you use Internet 4G or EDGE/GPRS devices with your computer more often, you can separately watch the data volumes transmitted through each of these services. The values are displayed in kB.

#### Control Buttons

Application control buttons can be found in the bottom part of the window (described from left to right):

- key – displays configuration options (settings)
- receiver – connects the computer to the Internet using the selected device
- mobile telephone – displays a window with SMS editor and with signal/battery gauges; in case of a 4G device, technical information about the connected device and effective signal strength/battery gauges is displayed
- waste bin – used to uninstall the selected device
- question mark – help

The buttons are available according to the current status of the application. It is not for example possible to send SMS messages and connect through GPRS at the same time. Unavailable buttons are gray, available buttons change their color to red when the mouse cursor is placed over them. Closing the window (using the top right button with cross) minimizes the application. It can be recalled again by double clicking on its icon on Windows task bar. If you want to close the application, click once on the application icon on the task bar and select **Exit**.

## 6. Connection and Disconnection

For the possibility to connect to the Internet, at least one Internet 4G or EDGE/GPRS device must be installed. It is usually installed already during the installation of the Web'n'walk Manager, however, it can be carried out at any time – see the procedure described in Section 9.

### Step 1

Select the handset or card you want to connect with from the pull-down menu with the list of available devices.

### Step 2

Make sure that the device is correctly connected to the computer (by cable, Bluetooth, infrared port, or PCMCIA card).

### Step 3

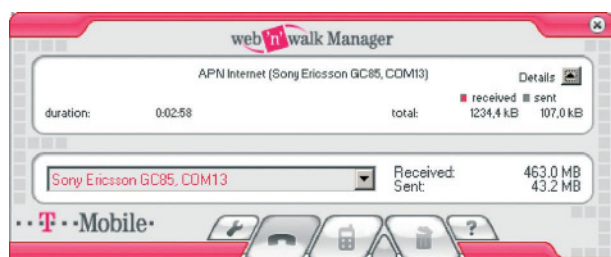
Press the button with receiver and await connection establishment. The connection progress is displayed on the screen.

If you have set up multiple connections for the particular device (see Section 9), you will be first prompted to choose the required connection. However, you will most probably use only the Internet connection (through APN Internet), which will be automatically used as default connection.

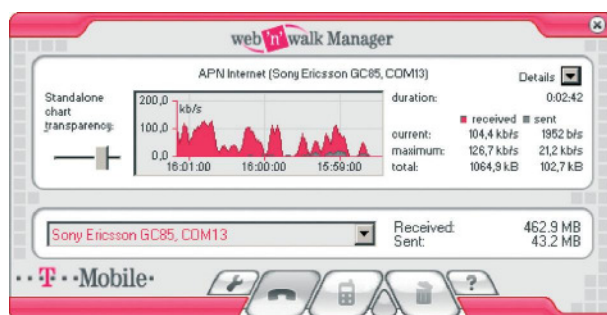
**Note:** If you are going to use a 4G Modem or a 4G PC Card, the PIN code request on your SIM card is active and you will be prompted to enter your PIN code before the first connection. It is possible to deactivate the PIN code protection in the window used for PIN entry.

If you are going to use Option Globetrotter GPRS PCMCIA card, it is necessary to deactivate the PIN code request on your SIM card! The PIN request must be also deactivated whenever you use this card together with Web'n'walk Manager (for example when connecting through GPRS). Standard drivers supplied with the Option card must be installed when the PIN code protection is required for the data SIM card used – see the procedure described in Section 11. Unless you really need to have the PIN protection active, we do not recommend installation of the standard service application supplied by Option due to problems with some Windows configurations. Provided that the PIN protection of the SIM card is off, the card can be operated with Web'n'walk Manager installation only.

Once the connection is set up, the window will display a duration of connection and a meter of total data volume transmitted during the current connection. The „Details“ button is displayed in the right corner. It allows to get more information about current connection.



After you pressed the „Details“ button the window will display a meter of data volume transmitted during the current connection and graphic connection speed meter, which informs you about the current transmission speed. The values are displayed in bytes or kilobytes per second. It is also possible to set up transparency of an external graph displayed in the bottom right screen corner. This graph can be used for continuous monitoring of the transmission speed (the graph is transparent it is possible to click through it). When the minimal transparency value is set (the indicator next to the speed meter is moved far left), the external graph will not be shown.



The following information can be found right from the graphic speed meter:

- duration of connection – in hh:mm:ss format
- current – current transmission speed in bytes or kB per second
- maximum – maximal speed of transmission reached during current session measured in bytes or kilobytes per second
- total – amount of data sent and received during the current session measured in bytes or kilobytes

When a connection is active, the button with receiver changes its appearance to a replaced handset. Clicking this button will terminate the connection.

When the particular EDGE/GPRS device is connected, sending of SMS messages or its removal will not be possible – relevant buttons will not be accessible in such case. If you use and have multiple devices installed in the Web'n'walk Manager, it is possible to send SMS messages through another device. It is however necessary to select it from the pull-down menu with the list of GPRS devices and only then click on the button with the envelope symbol.

**Note:** Actions relating to clicking on connection/disconnection button always relate to the device selected from the list. This means that if you choose a device from the list and press the receiver button, the connection will be established. If you subsequently select another device and click the receiver button again, the current connection will not be terminated – instead, the system will attempt to establish a new connection through the newly selected device. If you want to end the current connection in such case, you have to re-select the connected device from the list and press the receiver button. Please note the receiver position shown on the button – it informs you whether clicking the button will result in connection establishment or termination.



## 7. Connection to T-Mobile HotSpot

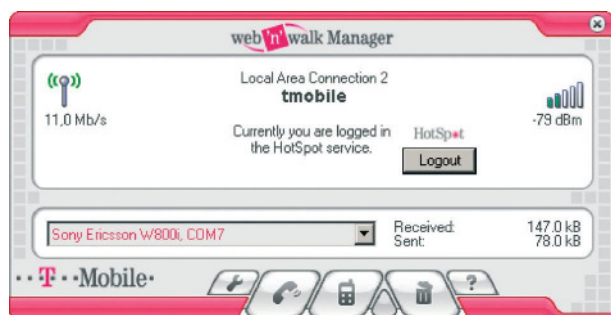
Web'n'walk Manager application can be used for easy connection setup and Internet access also through a high-speed wireless technology (WLAN). If your notebook support WLAN or if you have a WLAN card inserted, the connection to the Internet is very easy.

If a recognized WLAN card is available in your computer and the application web'n'w Manager recognized that T-Mobile HotSpot service is available, the w'n'w Manager window is extended by a top part.

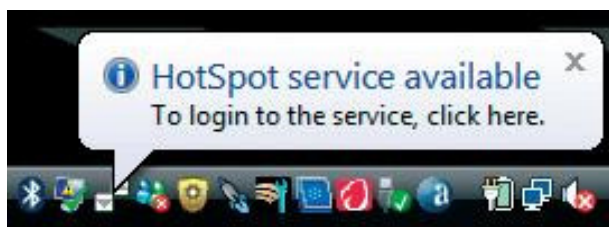
The customer can enter his/her name and password obtained within the framework of the T-Mobile HotSpot service and log into the network by clicking on Login. Name and password are stored for future use.



You can log off the T-Mobile HotSpot service by clicking the **Log off** button.



Availability of HotSpot service is announced by an information prompt in Windows notification area after its first recognition.



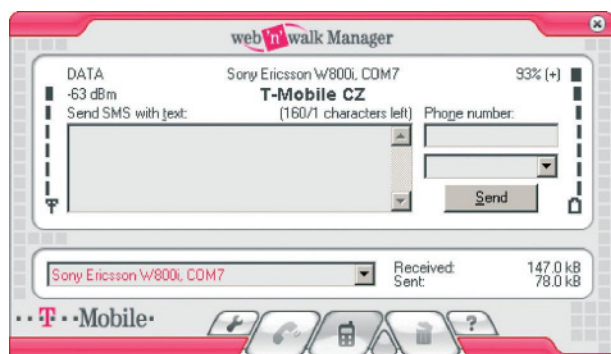
## 8. Sending SMS

You can send SMS messages using the devices installed with Web'n'walk Manager. The messages will be sent in the same way as in the case of sending them directly from the handset. With Web'n'walk Manager you can use the advantage of comfortable and fast writing of the messages using the computer keyboard.

**Note:** the SMS service is not available for the devices intended for Internet connection through the Internet 4G service. Web'n'walk does not enable SMS reception directly into the computer. This service is only available with a connected telephone. SMS reception is not possible for data cards.

Select the device which you want to use for sending SMS in the menu and connect the particular device to the computer (cable, bluetooth or infrared port or insert the PCMCIA card).

This is the window for sending SMS which is viewed after clicking the button with the picture of message:



It is possible to send SMS via the particular device only in case it is not connected via GPRS.

You can write the message of up to 160 characters in the text field. Right to that you can input the phone number of the recipient or you can use the list of contacts read from SIM-card or from the handset (the reading of the list takes several seconds depending on the number of stored contacts).

Left to the text field is the indicator of signal level and its value in decibels (dB) and on the opposite side of the window you can find the indicator of battery level. These elements are available in several seconds after opening this window (communication between computer and the device takes several seconds for getting this data).

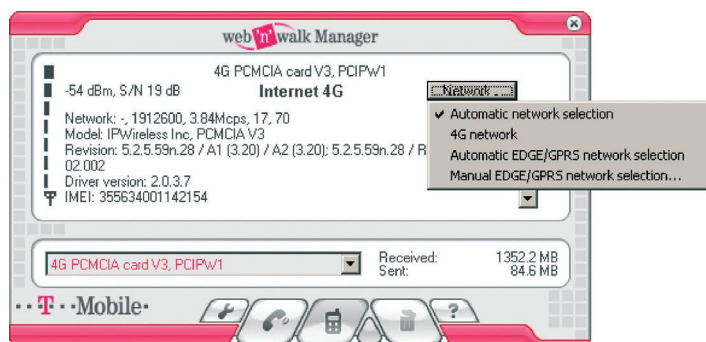
**Send** button is disabled if it is not possible to send the message or the message is being currently sent. If you press the button it gets disabled. In the time it is enabled again the message was successfully sent.

For closing this part of the window for sending the SMS press the button with picture of message again. Please note that actions related to this button are relevant for the device currently selected in the menu.

## 9. Network Selection and Logging-Off the Network

Web'n'walk Manager enables users that use Internet 4G (PCMCIA Combi card) to select their network manually. For EDGE/GPRS devices (PCMCIA card, external modem) automatic or manual network selection and signing off from the network without having to remove the SIM card from the data device.

Click on the button with the mobile phone icon “Open device”



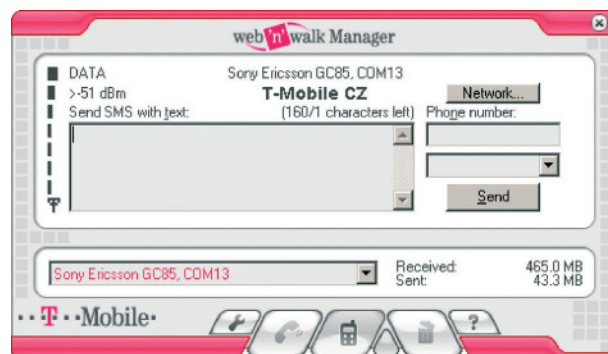
### Internet 4G (PCMCIA Combi card)

Manual network selection for Internet 4G devices.

### EDGE/GPRS modem (PCMCIA card, external modem)

Select your PCMCIA card or external EDGE/GPRS modem you use to connect to the Internet from the pull-down menu.

The network selection window is identical to that used for sending SMS messages – it is displayed after clicking on the button with telephone symbol.

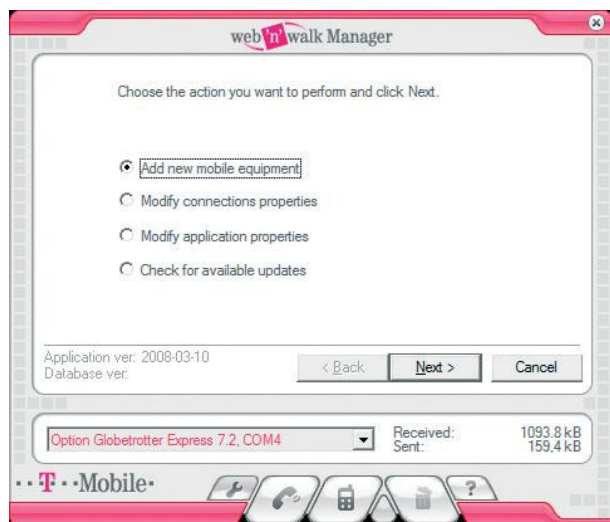


The 'Network' button is displayed next to the text field. If you click this button once, a menu will appear enabling you to select Automatic network selection, or Manual network selection and/or Logging-off the network.

# 10. Device Management

## Installation of new equipment

Press the **Settings** button, select **Add new mobile equipment** option and press **Next** button.



The following steps are same as in case of **installation (more in chapter 3)** starting with the step 7.

New device installed will be available automatically in menu of the main window.

## Uninstalling the device

Select the device which you want to uninstall in the menu in the main window.

Press the button for uninstalling.

The window with confirmation message will be displayed.



In case you are sure to uninstall it press **Finish** button.

The uninstalled device will be automatically removed from the menu of the main window.



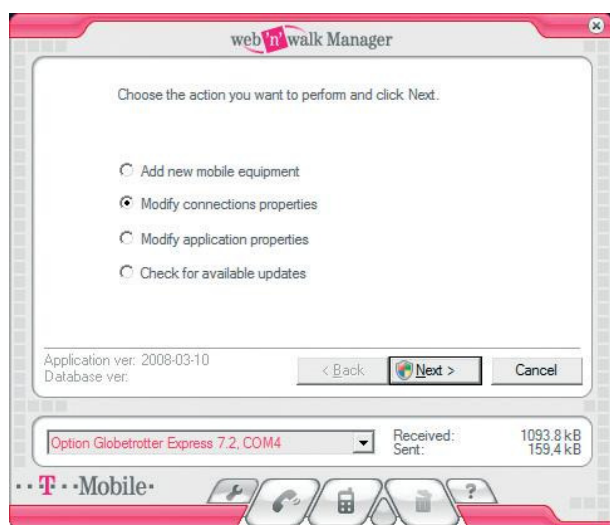
# 11. APN Management

## Adding a new APN

If you do not want to use any other but default connection in the Web'n'walk Manager (Internet connection through GPRS APN Internet – this applies in particular to business customers with their own APN), follow the procedure described below:

### Step 1

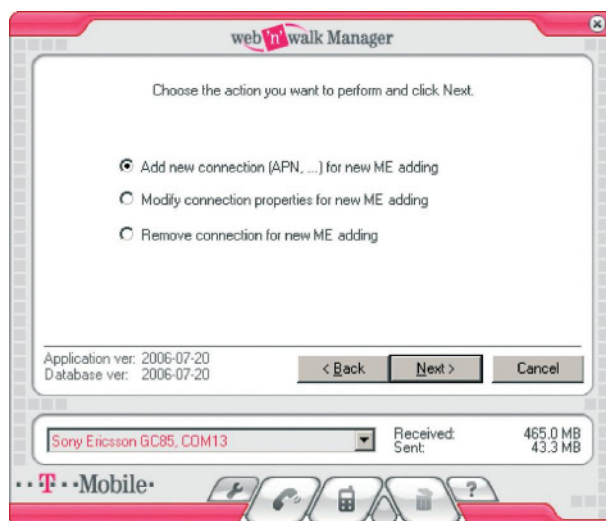
Press the button with the key symbol in the main window.



Select **Modify connection properties** and press **Next**.

### Step 2

Select **Add new connection (APN,...)** for new ME adding option.



Press **Next**.

Note: You can also modify the settings of current connection by selecting **Modify connection properties for new ME adding**. Changes will apply to newly added devices only – see the note below.

### Step 3

All connection parameters must be entered during the next three steps (press **Next** when all parameters for the particular step have been entered). It is recommended to contact your system administrator or another person that can provide you with information about your APN settings.

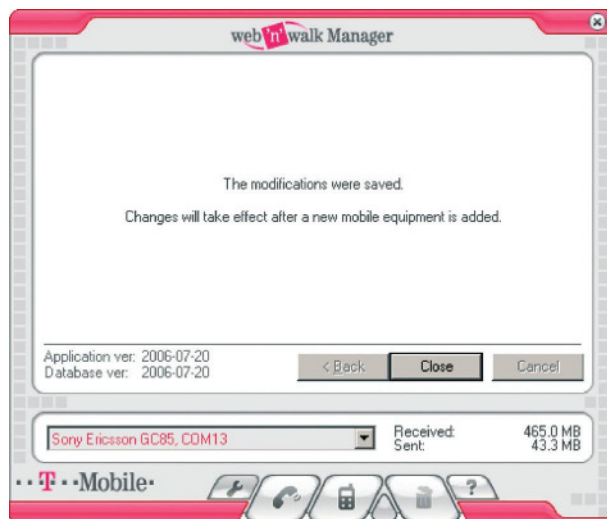




Press **Finish**.

#### Step 4

New APN will be saved.



Press **Close**.

**Note:** Considering the limitations inherent in some Windows versions, the new APN will be available for newly installed devices only. Should you require such APN for previously installed devices, it is necessary to remove the device and add it again in order to set the new APN (see Section 9).

#### Remove APN

Follow the next steps:

#### Step 1

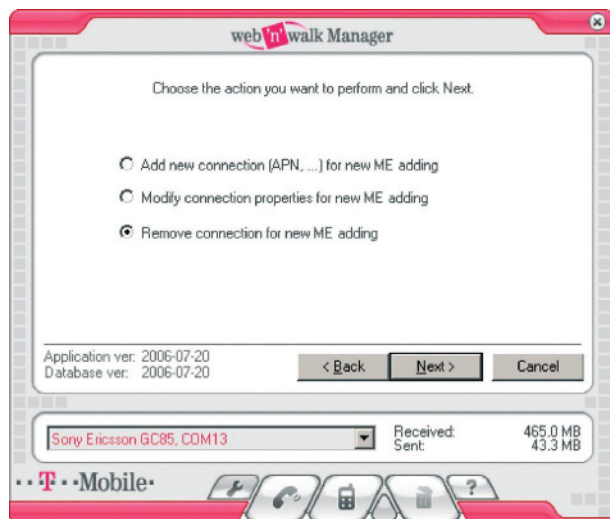
Press the button with the key symbol in the main window.



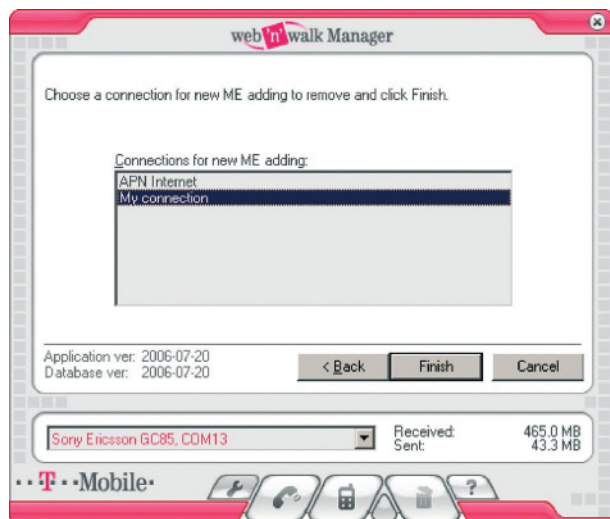
Select **Modify connection properties** and press **Next**.

**Step 2**

Select **Remove connection for new ME adding option**.



Press **Next**.

**Step 3**

Select the connection you want to remove from the list and press **Finish**.

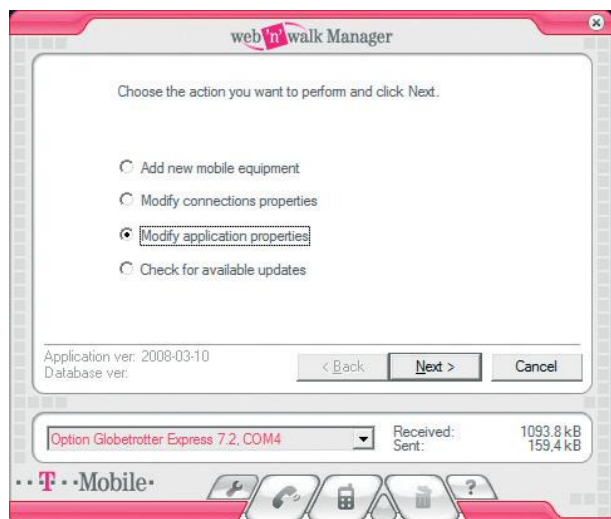
**Step 4**

Press **Close**.

**Note:** Considering the limitations inherent in some Windows versions, the removed APN will be available for existing devices until you remove the particular device and add it again (see Section 8).

# 12. Application Setup

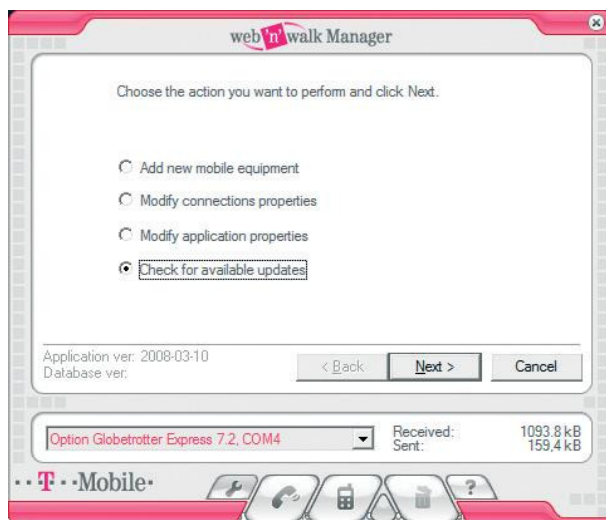
Press the key button and select **Change application settings** in displayed options. Press Next.



The following window enables you to control the Web'n'walk manager application.



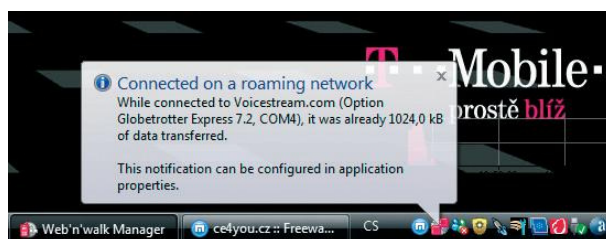
- The first option determines whether Web'n'walk manager will be started with Windows. We recommend to check this box.
- The second option permits automatic location and download of application updates. We recommend you to check this box. The application will automatically check for updates every two weeks and offer their installation. You can also check for the application updates manually at any time if this option is not checked. This is possible by clicking on **Find updates** in the main application window followed by clicking on **Next**. The computer must be connected to the Internet when checking for updates.



- Under **Data transfer measurement setup**, it is possible to select the format of units displayed in the application and to reset the data counters.
- The last option influences the application behavior when the SIM card is registered in roaming. Web'n'walk will always alert you before connection in roaming.



Once connected, the information notifies you periodically each time the specified data volume has been transferred. This can be suppressed by choosing **"never"** from the pull-down menu. We recommend you to keep this alert active in particular in border areas.



Click Finish button in the Application setup window to save all your settings.



# 13. For Advanced Users

## Using of PIN-lock with PCMCIA Option Globetrotter card

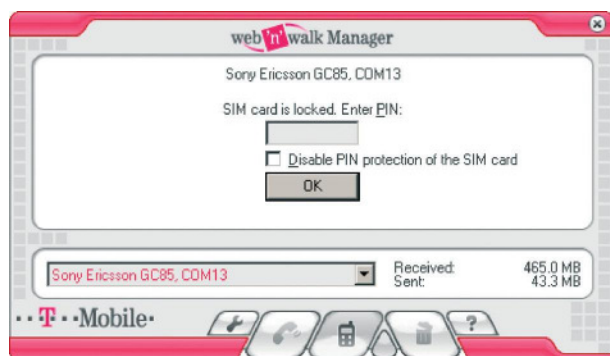
For using Web'n'walk Manager with PCMCIA card Option Globetrotter it is necessary to switch off PIN-lock on the SIM-card.

If it is necessary to have it switched on anyway you must install the original WCM driver available on original Option CD (part of Option pack). Follow the next steps:

1. Make sure that the card is NOT inserted in the computer.
2. In the case that you have installed the card via Web'n'walk Manager already remove it according to steps described in chapter 7, Uninstalling the device.
3. When the card is removed in Web'n'walk Manager insert the original Option CD into the device (it should be automatically started or start it by clicking the GTinst.exe file).
4. Make the WCM installation according to displayed instructions. Don't insert the card until you are not asked for that by the installer. It is possible to interrupt the installation in the time when the following window is displayed:



5. In the displayed window press Cancel (and also in the next error message). If you continue in the installation the special Option manager will be installed – but you don't need it if you connect via Web'n'walk Manager. We recommend to install Option manager only if you are going to use e.g. voice functions of the card).
6. Add the card as a new device in Web'n'walk Manager again.
7. Now you will be asked for PIN input during the connection if the PIN-lock is switched on in the SIM-card:



Due to problems of the original driver with some configurations of Windows operating system we don't recommend its installation and rather we recommend to switch off the PIN lock in the SIM-card.

In case of using the original driver we recommend to wait 20–30 seconds after the insertion of the card for its full initialization and then to make connection.

## External configuration file for installation

In case of adding the new connection (APN) according to chapter 8 in the directory where Web'n'walk Manager is installed is newly available userconn.ini file. There are parameters of connection configuration of both standard APN Internet and newly created APNs.

It is possible to use this file if you are going to install Web'n'walk Manager on other computers with the same configuration of connections. If this file is available in the same directory as the installation setup.exe file during the installation Web'n'walk Manager will be pre-configured with these options after the installation. If the configuration file is not available in the same directory during the installation only standard APN Internet connection will be configured.

It is possible to edit the file manually too. This is its structure (example of standard configuration for APN Internet):

```
[APN Internet]
userName="gprs"
password="gprs"
domain=""
apn="internet.t-mobile.cz"
ip=0.0.0.0
primaryDns=62.141.0.1
secondaryDns=213.162.65.1
primaryWins=0.0.0.0
secondaryWins=0.0.0.0
proxy=""
proxyBypass=""
```

This group of lines can be repeated in the file as many times as many different connections you want to create.

# 13. Abbreviations

APN	Access Point Name	Access point name
CD	Compact disk	Data carrier
GPRS	General Packet Radio Service	Technology of fast mobile data transmission
GSM	Global System for Mobile Communications	Mobile telephone network
IR	Infra Red	Infrared port
PC	Personal Computer	Personal computer
SMS	Short Message Service	Short text message service
WLAN	Wireless Local Area Network	Wireless local network